



Conditii acceptare piese vachi la schimb Alternatoare, generatoare



Ambalare in cutia piesei noi – Back in Box



Pentru a proteja piesa veche impotriva deteriorarii, va rugam sa impachetati piesa veche in cutia piesei noi.



Piese neacceptate



Piesa dezasamblata



Coroziune excesiva sau suprafata arsa



Componente lipsa sau deteriorate



Componente care nu sunt originale.

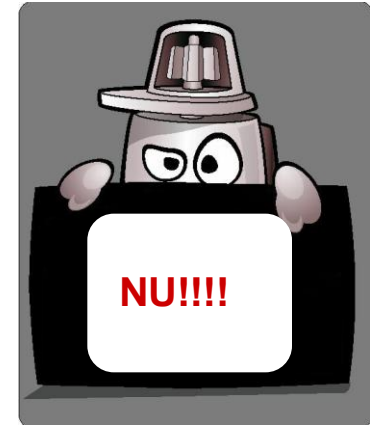
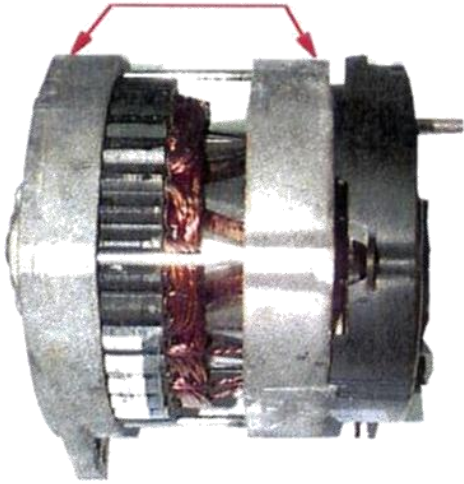


Componente care nu sunt incluse pe lista pieselor de schimb.

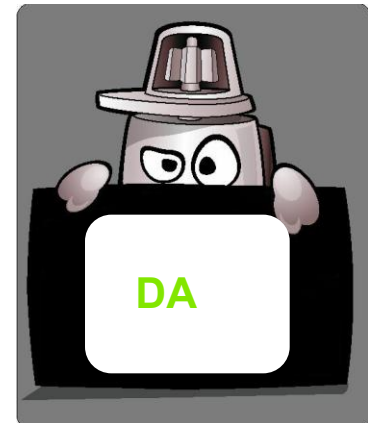
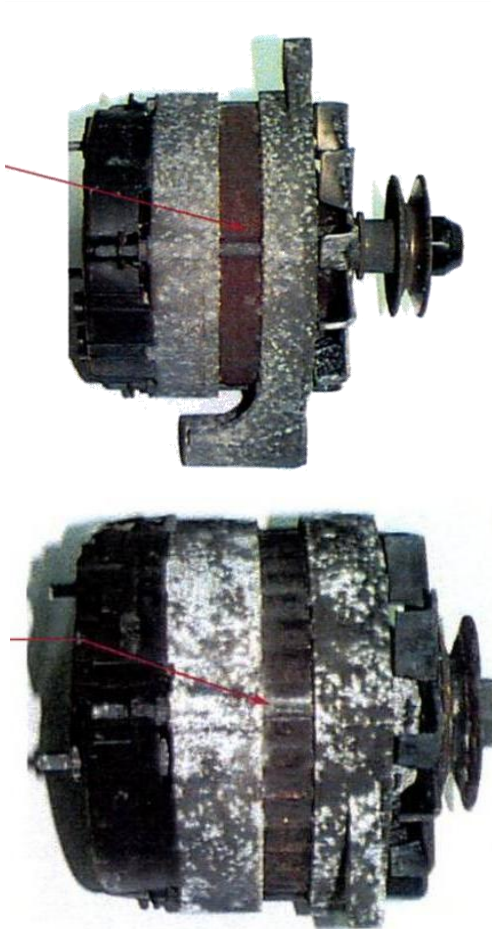


Piesa la schimb care nu poate fi identificata.

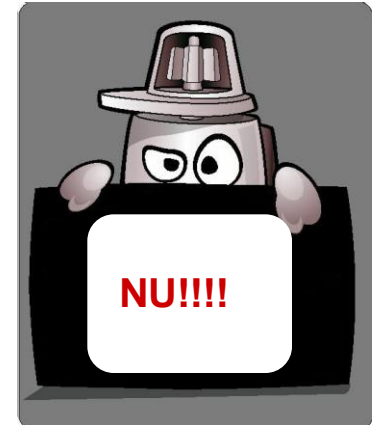
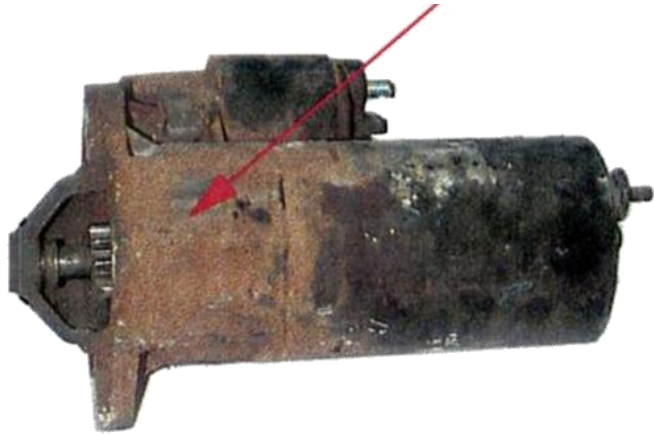
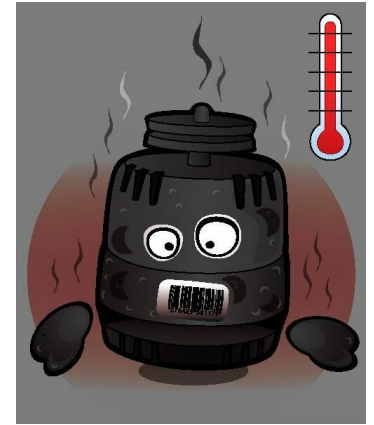
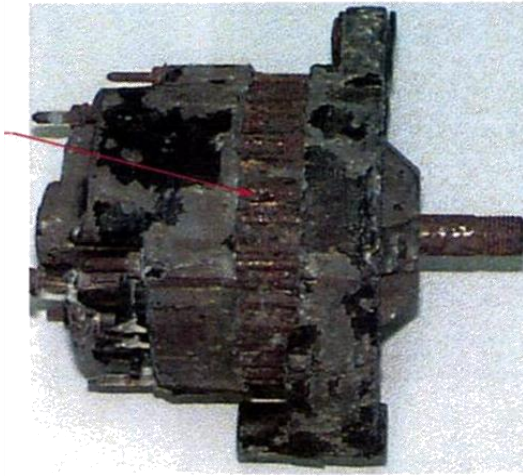
Piesa dezasamblata



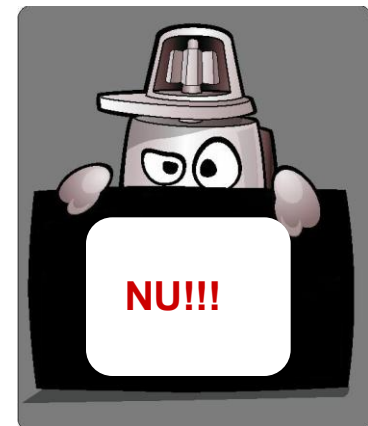
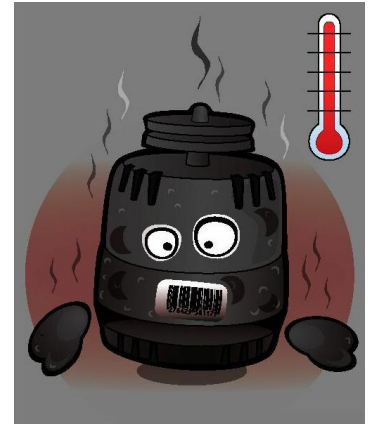
Suprafata usor corodata



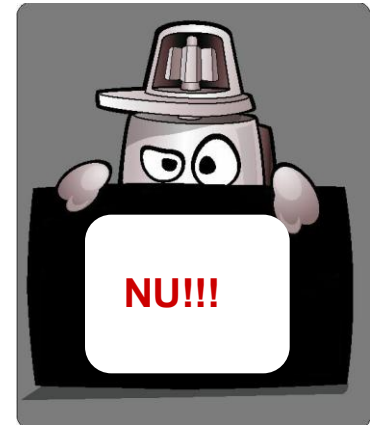
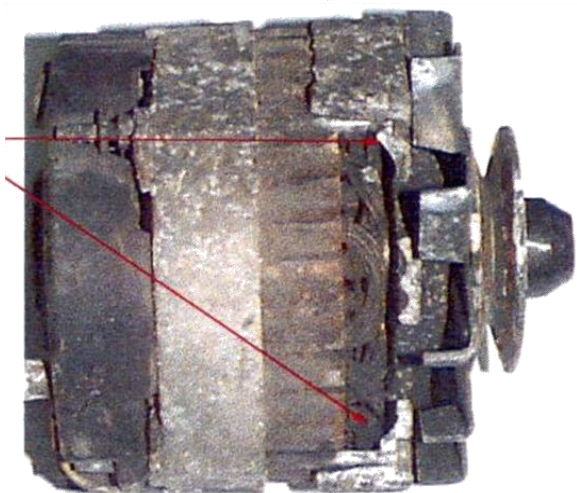
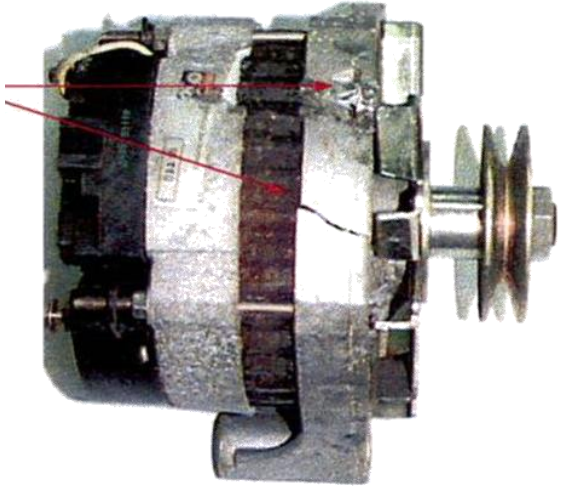
Suprafata corodata excesiv



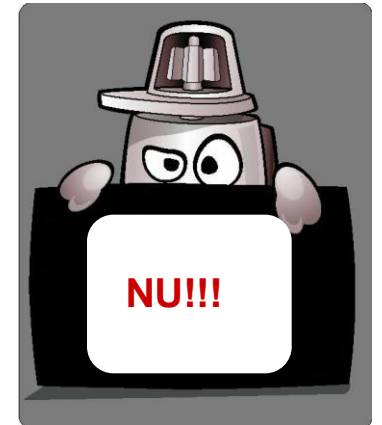
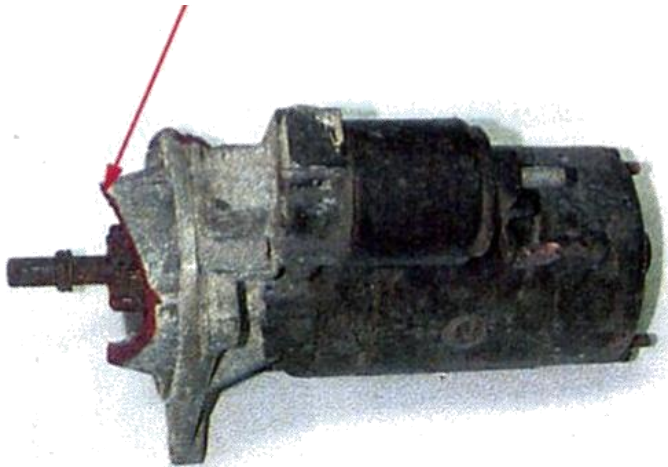
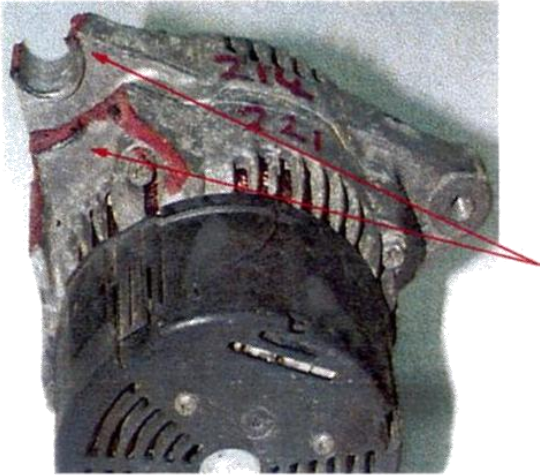
Suprafata arsa



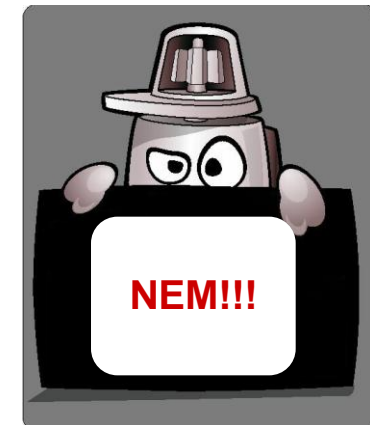
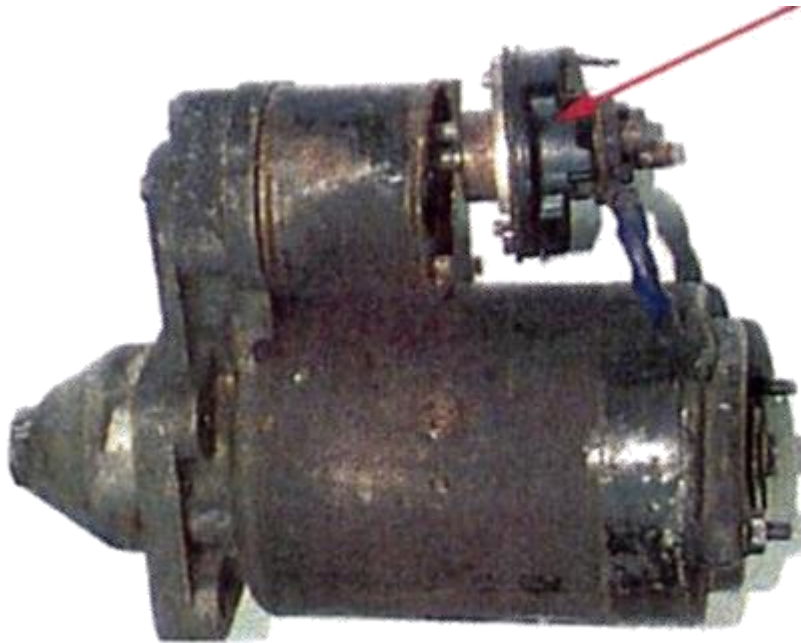
Suporturi rupte



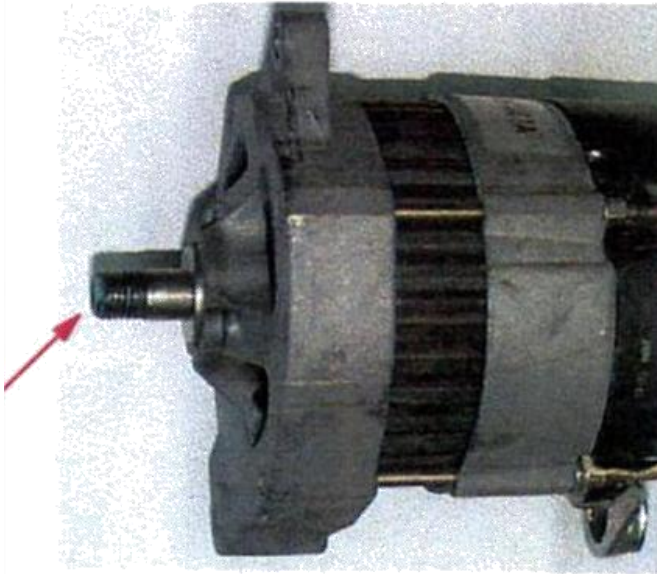
Carcasa rupta



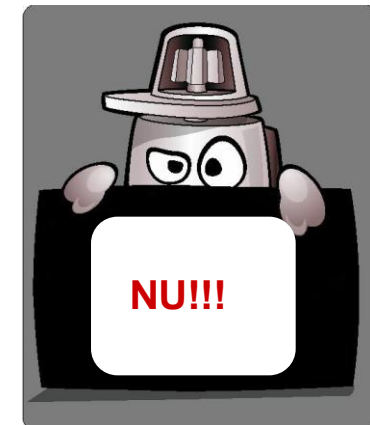
Electromagnet deteriorat



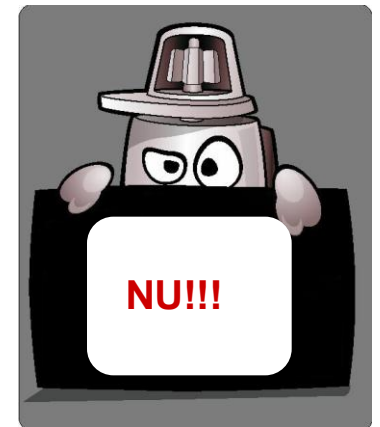
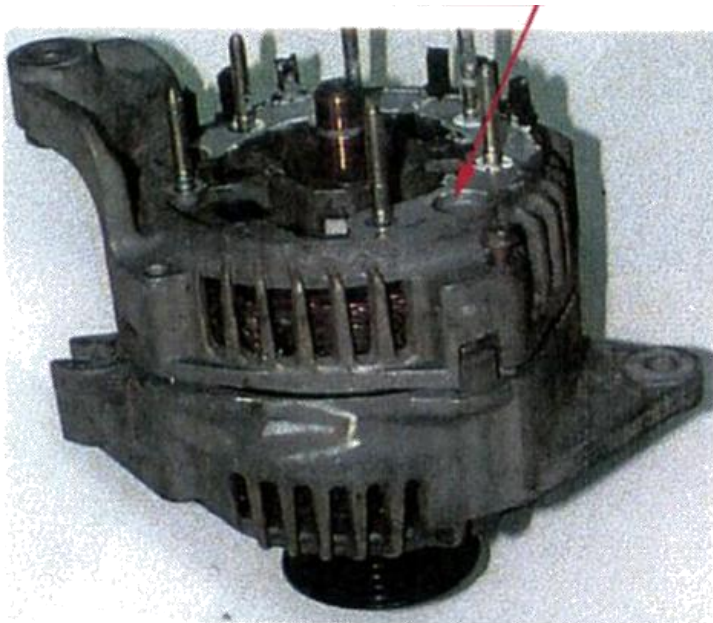
Fulie lipsa



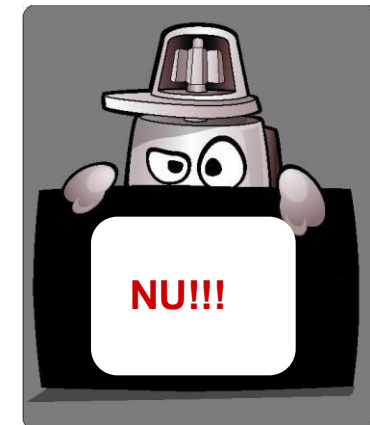
* piesele marcate cu steluta in lista Pieselor reconditionate pot fi returnate si fara fulie



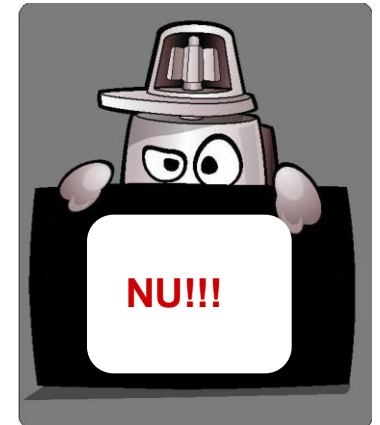
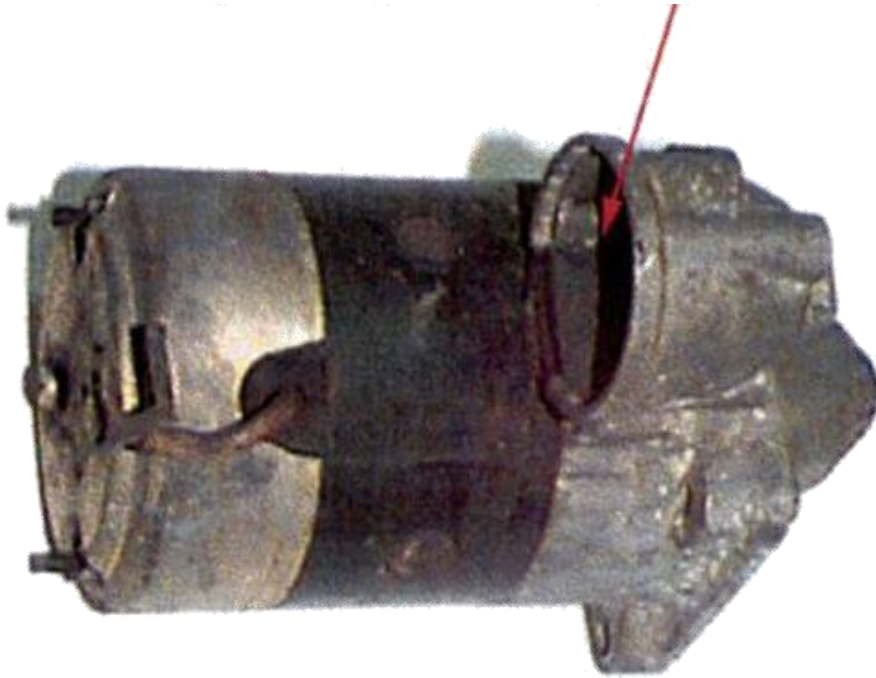
Diode lipsa



Regulator tensiune lipsa



Electromagnet lipsa



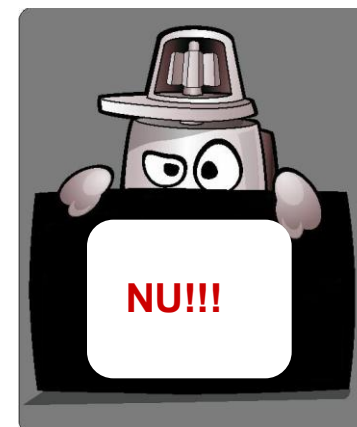
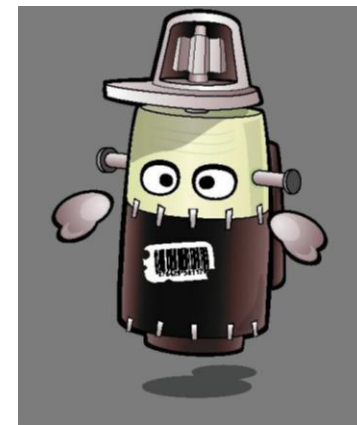
Piesa modificata in trecut de catre un alt producator



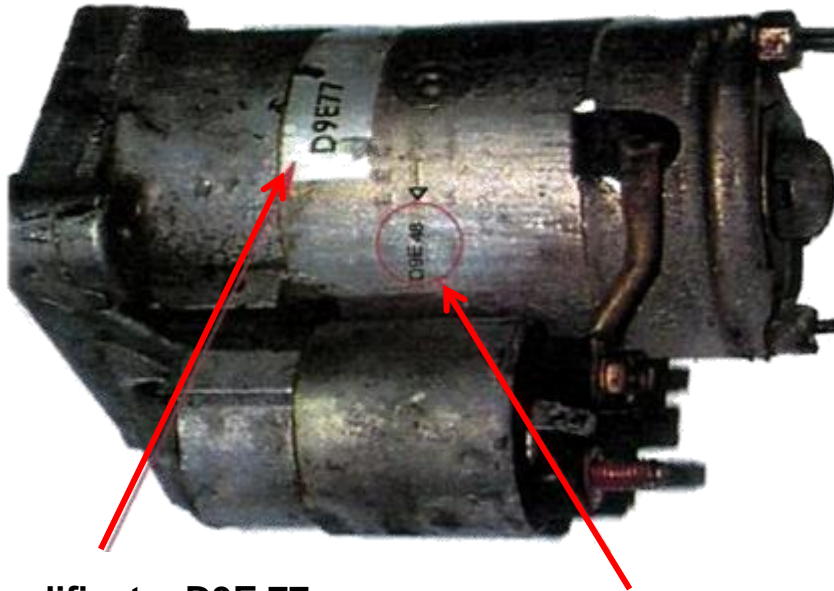
Eticheta modificata: A13 N95



Eticheta originala: A13 N38

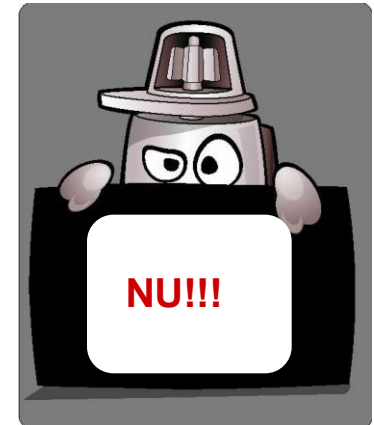


Korábban más gyártó által módosított alkatrész



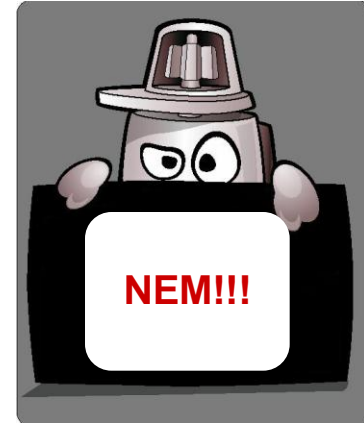
Eticheta modificata: D9E 77

Cod original stantat: D9E 48





Piesa la schimb nu se regaseste pe lista



Nu se poate identifica

